

PIGMENT IMAGE DATABASE UNDER UV AND IR RADIATIONS

Extract #4

Historical pigments : BLUE

CENTRE DE
RECHERCHE
ET DE
RESTAURATION
DES MUSÉES
DE FRANCE


Groupe Imagerie, département Recherche du C2RMF

Responsable groupe Imagerie : Clotilde Boust

Laurence Clivet, Jean-Louis Bellec, Jérôme Rumolo, Anne Wohlgemuth



MISE EN GARDE CAUTION

Attention ! Nos données sont partagées à titre indicatif, et n'ont en aucun cas une valeur universelle. 

Nos données dépendent de plusieurs paramètres, notamment le matériel photographique utilisé, ainsi que le liant, le mélange, le vieillissement et la concentration des pigments. Avant d'utiliser ces données, merci de consulter notre article « Mémo des procédures photographiques » sur le site internet www.copa.hypotheses.org. Vous aurez ainsi accès à toute la chaîne de production de nos images. Nous vous conseillons d'utiliser ces données avec la plus grande précaution.

Please, notice our data are shared for information only and do not constitute a universal database.

Our data depend on several parameters, including the photographic material used (camera and filter), and the mixture, the aging, and the concentration of the pigments. Before using this data, please read our article “memo of the photographic procedures” on www.copa.hypotheses.org. You will have access to the whole production chain of our images.

Please use this data with caution.



HISTORICAL PIGMENTS : KREMER PRODUCTION

BLUE PIGMENTS

Kremer n° 10010	Smalt, very fine, according to a recipe from 1820, < 80 µm
Kremer n° 10060	Egyptian Blue, blue copper silicate, <120 µm
Kremer n° 10071	HAN-Blue, fine, the blue of ancient China, 0 - 40 µm
Kremer n° 10074	HAN-Purple, fine, < 40 µm, color of ancient China
Kremer n° 10180	Blue Verditer, synthetic Azurite, blue bice, cendres blue
Kremer n° 10184	Blue Bice, Copper Calcium Carbonate, CCC Blue
Kremer n° 10206	Azurite MP, pale, 38 - 63 µm
Kremer n° 10210	Azurite natural fine, 0 - 80 µm
Kremer n° 104201	Sodalite, fine, 0 - 80 µm, bluish-purple gray pigment
Kremer n° 10500	Lapis Lazuli, grayish-blue, natural ultramarine
Kremer n° 10530	Lapis Lazuli, pure, Fra Angelico Blue
Kremer n° 1056020	Lapis Lazuli from Chile, 0 - 20 µm

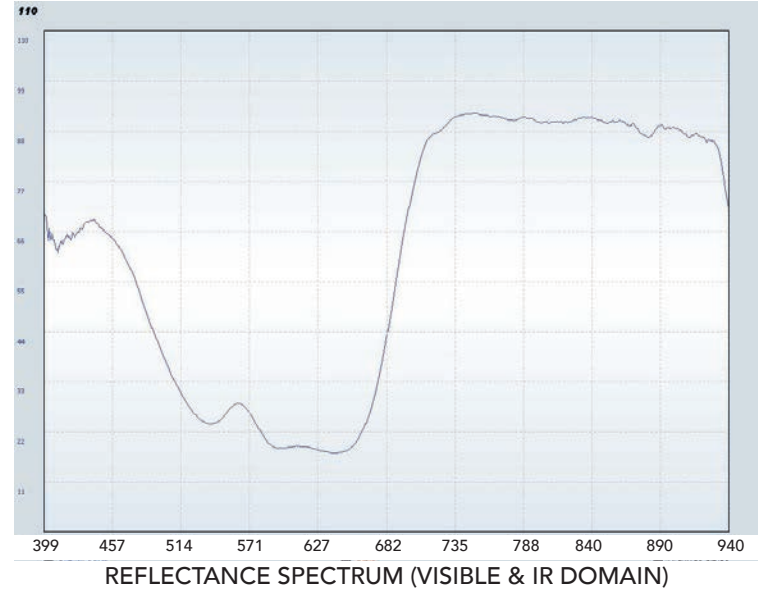
Kremer n° 10010
 Smalt, very fine,
 according to a recipe
 from 1820, < 80 μm



IRFC



UVFC



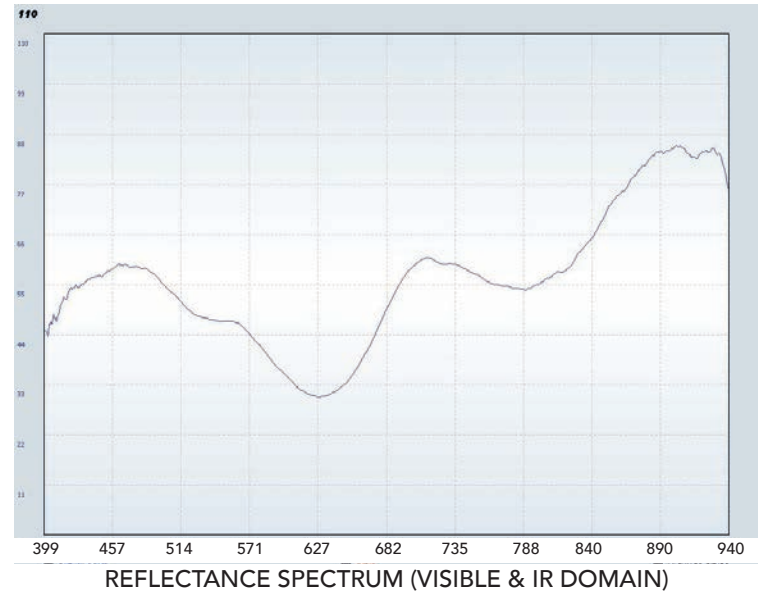
Kremer n° 10060
 Egyptian Blue
 blue copper silicate,
 <120 μm



IRFC



UVFC

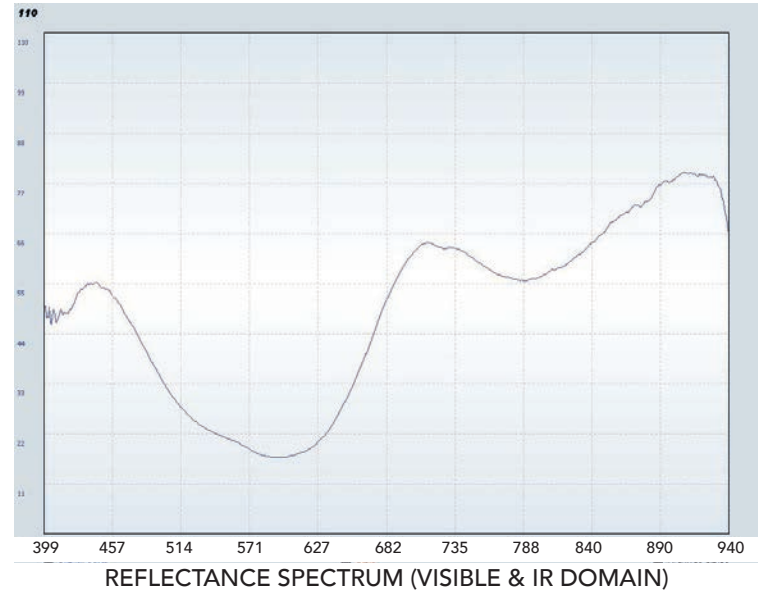


Kremer n° 10071
HAN-Blue, fine
the blue of ancient
China, 0 - 40 μm

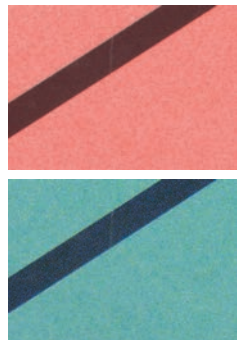


IRFC

UVFC

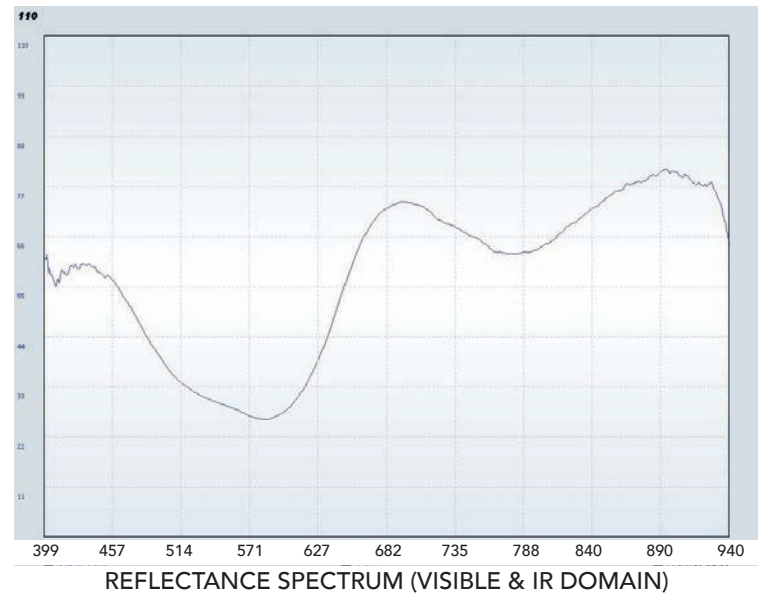


Kremer n° 10074
HAN-Purple, fine
< 40 μm , color of
ancient China

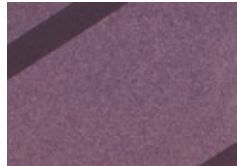


IRFC

UVFC



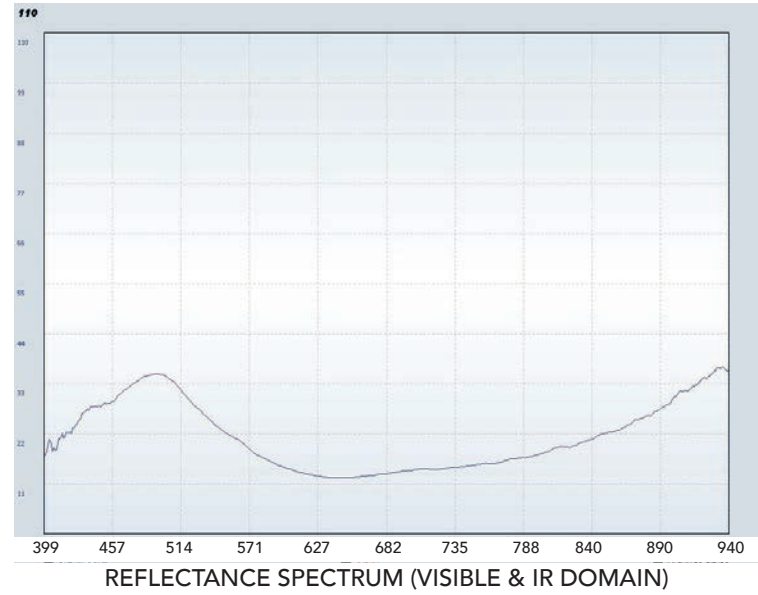
Kremer n° 10180
Blue Verditer
synthetic Azurite, blue
bice, cendres blue



IRFC



UVFC



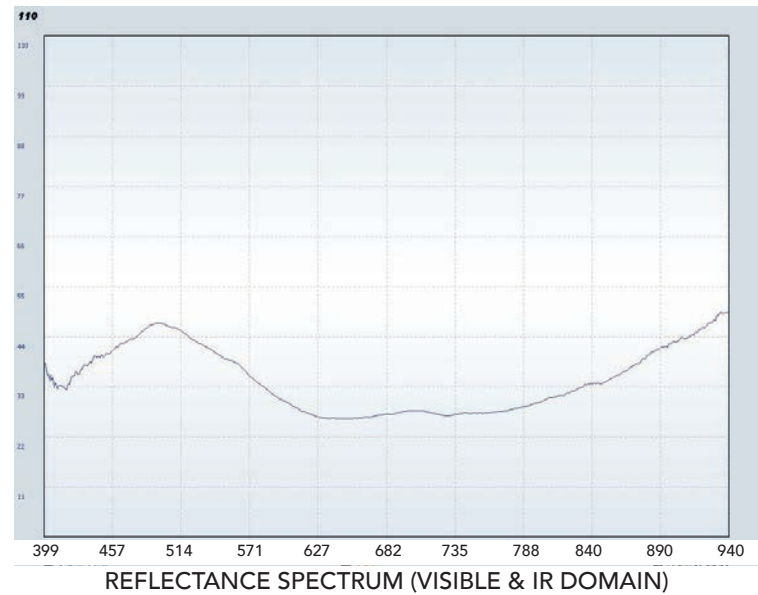
Kremer n° 10184
Blue Bice, Copper
Calcium Carbonate,
CCC Blue



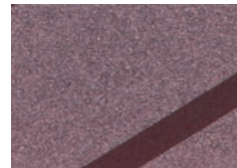
IRFC



UVFC



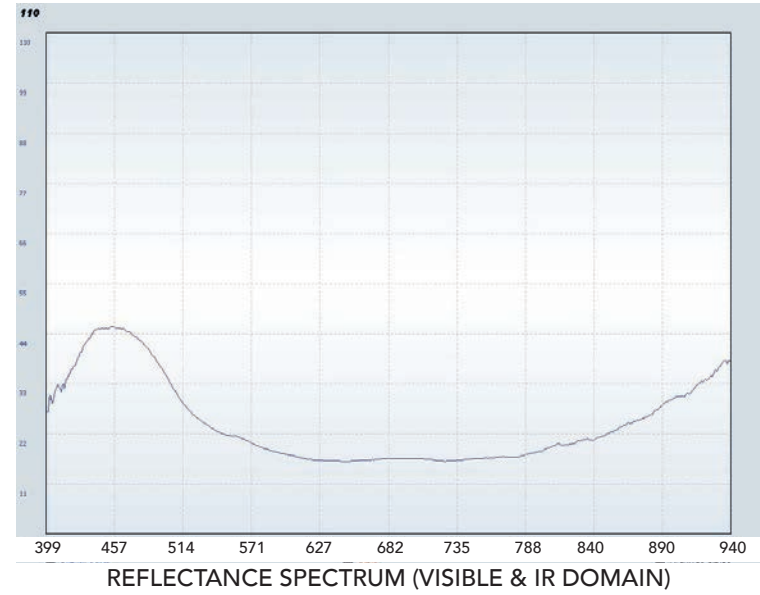
Kremer n° 10206
Azurite MP, pale
38 - 63 μm



IRFC



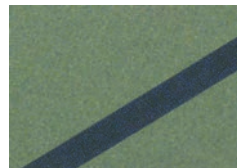
UVFC



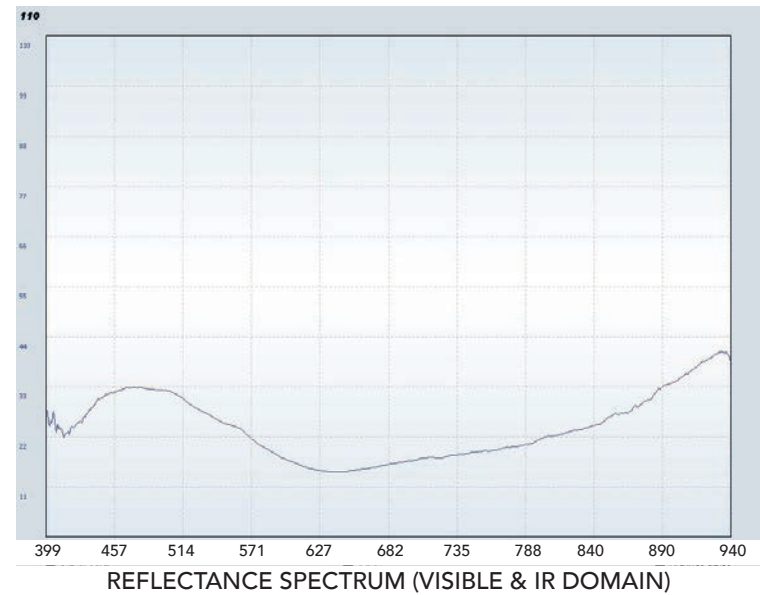
Kremer n° 10210
Azurite natural fine
0 - 80 μm



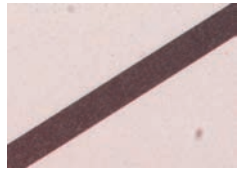
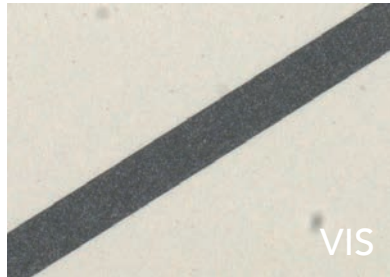
IRFC



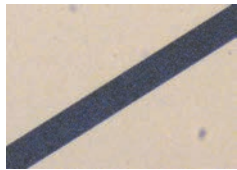
UVFC



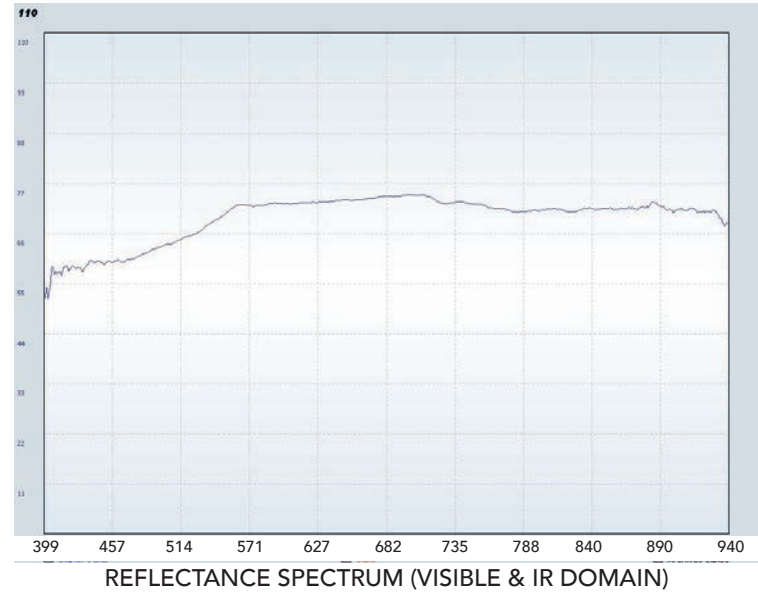
Kremer n° 104201
Sodalite, fine
0 - 80 µm , bluish-
purple gray pigment



IRFC



UVFC



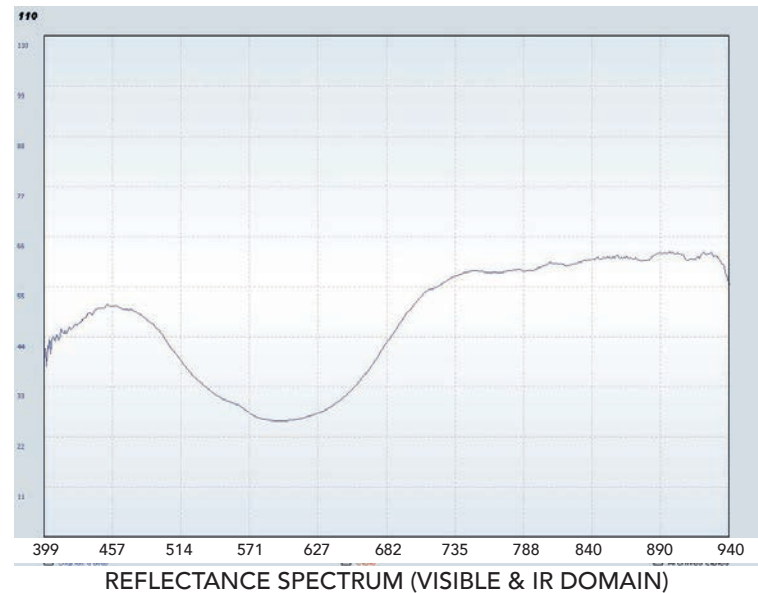
Kremer n° 10500
Lapis Lazuli,
grayish-blue, natural
ultramarine



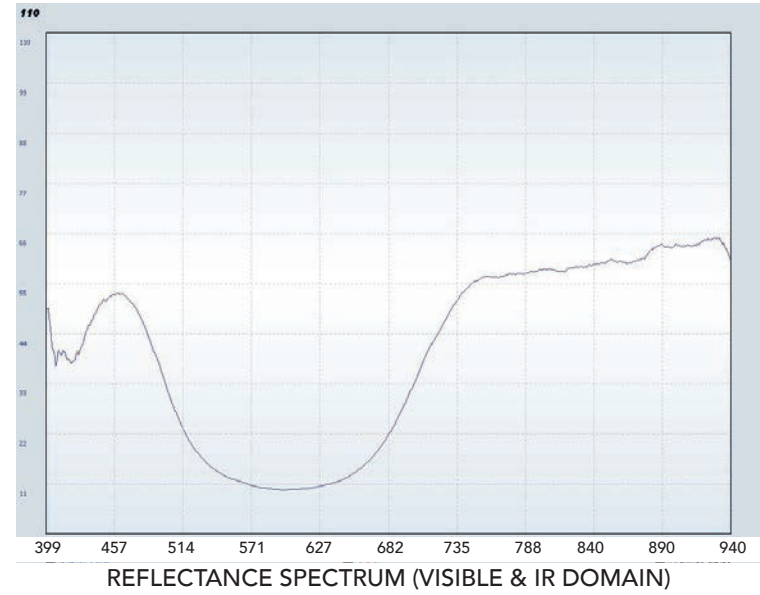
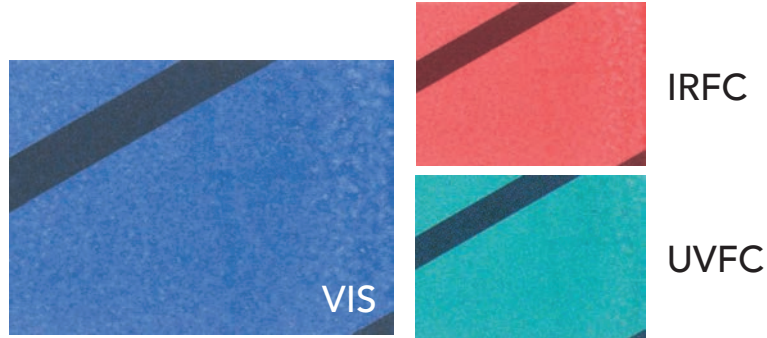
IRFC



UVFC



Kremer n° 10530
Lapis Lazuli, pure
Fra Angelico Blue



Kremer n° 1056020
Lapis Lazuli from
Chile, 0 - 20 μm

