

PIGMENT IMAGE DATABASE UNDER UV AND IR RADIATIONS

Extract #7

CADMIUM PIGMENTS : Red, Green, Yellow

CENTRE DE
RECHERCHE
ET DE
RESTAURATION
DES MUSÉES
DE FRANCE


Groupe Imagerie, département Recherche du C2RMF

Responsable groupe Imagerie : Clotilde Boust

Laurence Clivet, Jean-Louis Bellec, Jérôme Rumolo, Anne Wohlgemuth



MISE EN GARDE CAUTION

Attention ! Nos données sont partagées à titre indicatif, et n'ont en aucun cas une valeur universelle. 

Nos données dépendent de plusieurs paramètres, notamment le matériel photographique utilisé, ainsi que le liant, le mélange, le vieillissement et la concentration des pigments. Avant d'utiliser ces données, merci de consulter notre article « Mémo des procédures photographiques » sur le site internet www.copa.hypotheses.org. Vous aurez ainsi accès à toute la chaîne de production de nos images. Nous vous conseillons d'utiliser ces données avec la plus grande précaution.

Please, notice our data are shared for information only and do not constitute a universal database.

Our data depend on several parameters, including the photographic material used (camera and filter), and the mixture, the aging, and the concentration of the pigments. Before using this data, please read our article “memo of the photographic procedures” on www.copa.hypotheses.org. You will have access to the whole production chain of our images.

Please use this data with caution.



CADMIUM PIGMENTS : KREMER PRODUCTION

RED PIGMENTS

Kremer n° 21080	Cadmium Orange No. 0 very light, very lightfast, opaque
Kremer n° 21090	Cadmium Orange No. 0.5, light, very lightfast, opaque
Kremer n° 21100	Cadmium Orange No. 1, medium, very lightfast, opaque
Kremer n° 21110	Cadmium Orange No. 2, vermilion, very lightfast, opaque
Kremer n° 21120	Cadmium Red No. 1, light, very lightfast, opaque
Kremer n° 21130	Cadmium Red No. 2, medium, very lightfast, opaque
Kremer n° 21140	Cadmium Red No. 3, dark, very lightfast, opaque
Kremer n° 21150	Cadmium Red No. 4, bluish purple, very lightfast, opaque

GREEN PIGMENTS

Kremer n° 44500	Cadmium Green, light, mixture of cadmium yellow and ultramarine blue
Kremer n° 44510	Cadmium Green, dark, mixture of cadmium yellow and ultramarine blue

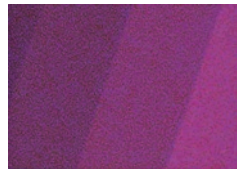
YELLOW PIGMENTS

Kremer n° 21010	Cadmium Yellow Lemon No.1, very lightfast, opaque
Kremer n° 21020	Cadmium Yellow No. 2, very light, very lightfast, opaque
Kremer n° 21030	Cadmium Yellow No. 4 light, very lightfast, opaque
Kremer n° 21040	Cadmium Yellow No. 6, medium, very lightfast, opaque
Kremer n° 21050	Cadmium Yellow No. 8, medium dark, very lightfast, opaque
Kremer n° 21060	Cadmium Yellow No. 9, dark, very lightfast, opaque

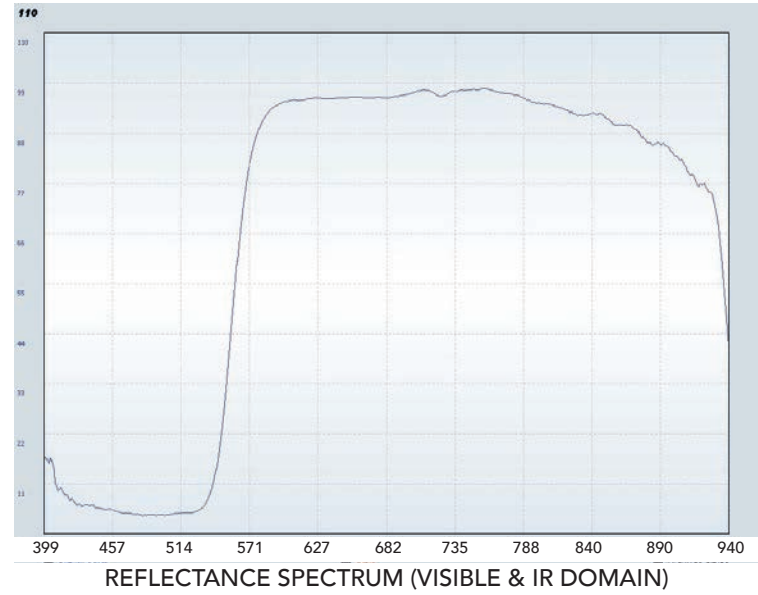
Kremer n° 21080
Cadmium Orange
No. 0 very light, very
lightfast, opaque



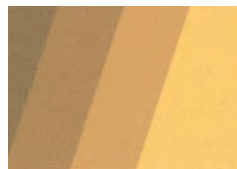
IRFC



UVFC



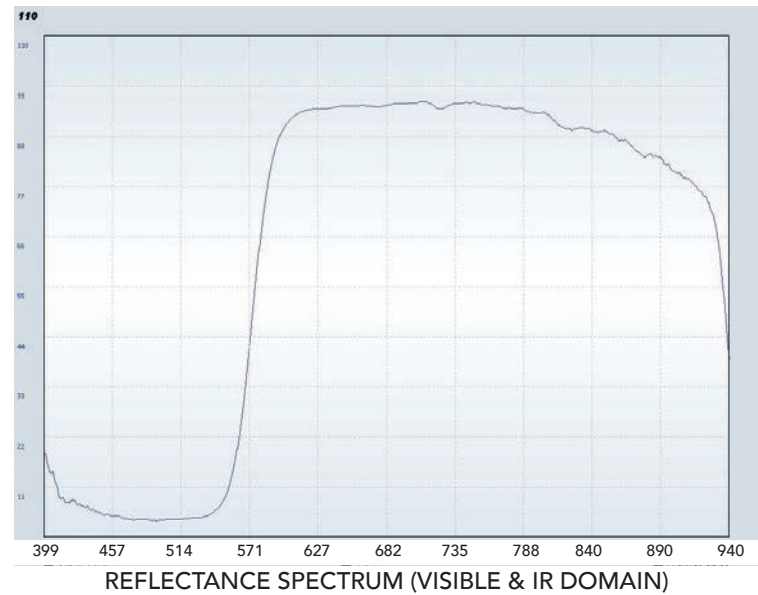
Kremer n° 21090
Cadmium Orange
No. 0.5, light, very
lightfast, opaque



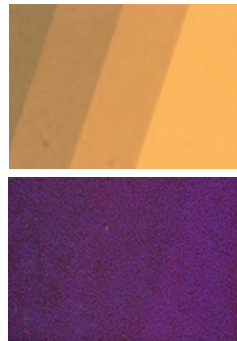
IRFC



UVFC

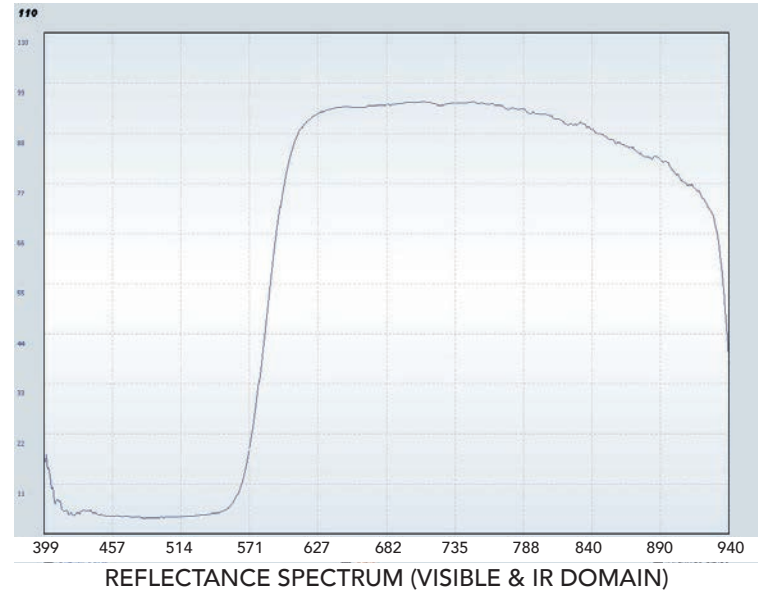


Kremer n° 21100
 Cadmium Orange
 No. 1, medium, very
 lightfast, opaque

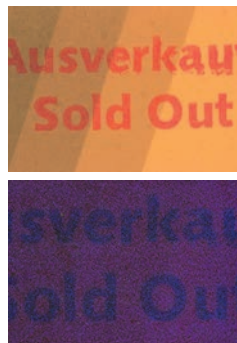
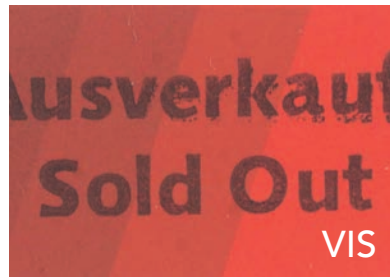


IRFC

UVFC

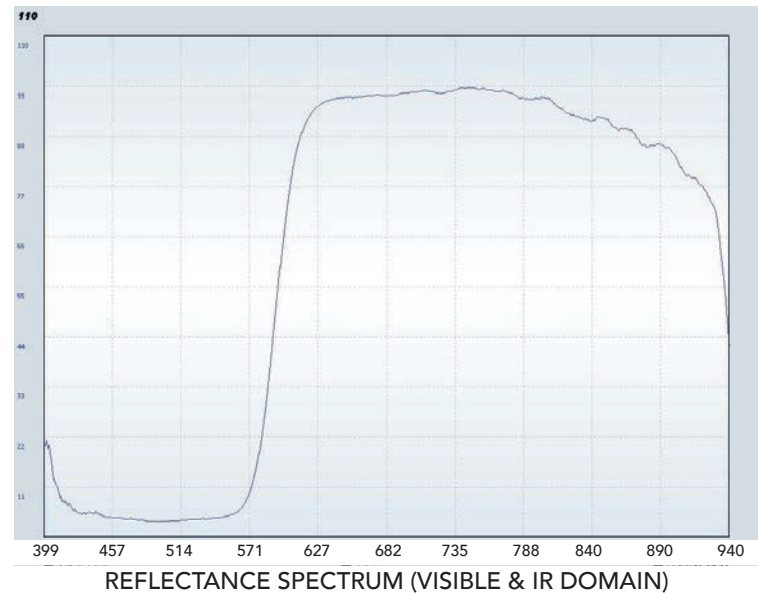


Kremer n° 21110
 Cadmium Orange
 No. 2, vermilion, very
 lightfast, opaque

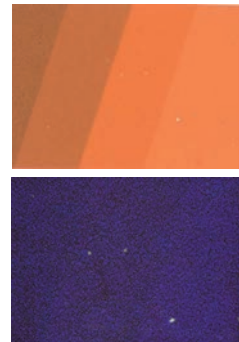
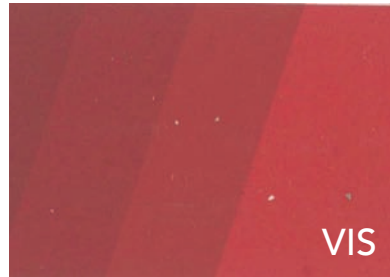


IRFC

UVFC

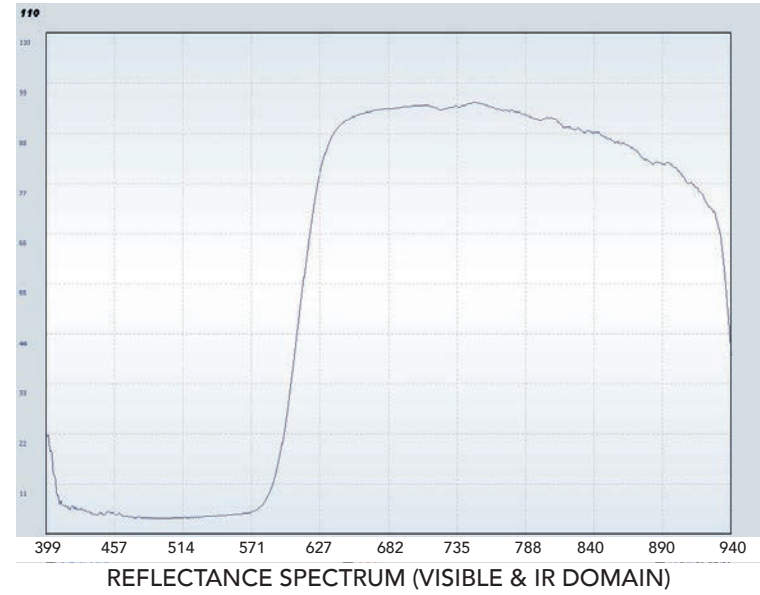


Kremer n° 21120
Cadmium Red
No. 1, light, very
lightfast, opaque

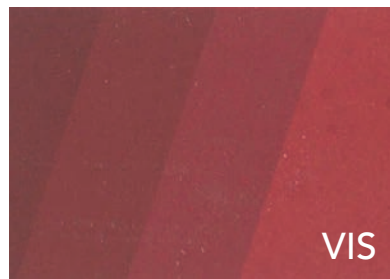


IRFC

UVFC

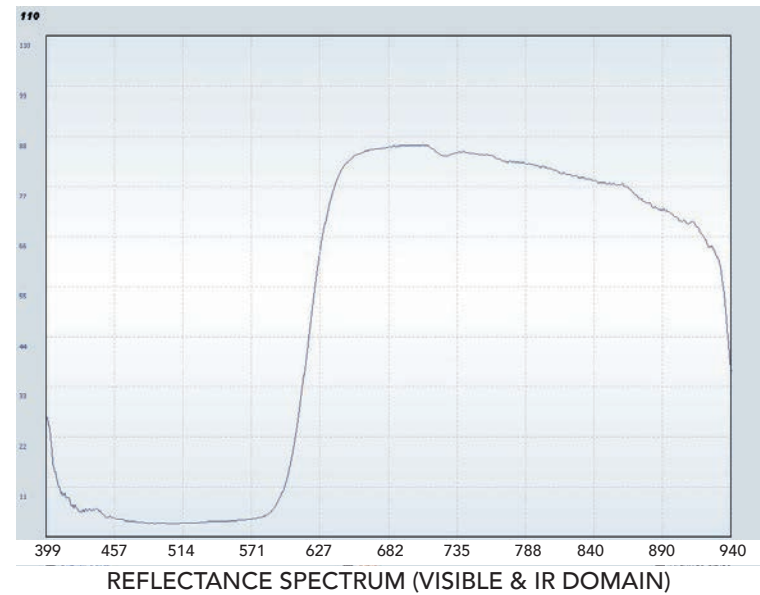


Kremer n° 21130
Cadmium Red
No. 2, medium, very
lightfast, opaque

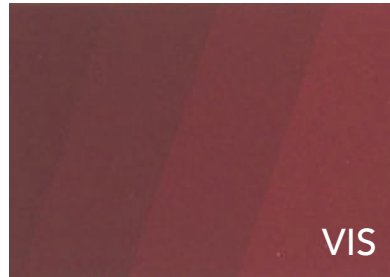


IRFC

UVFC

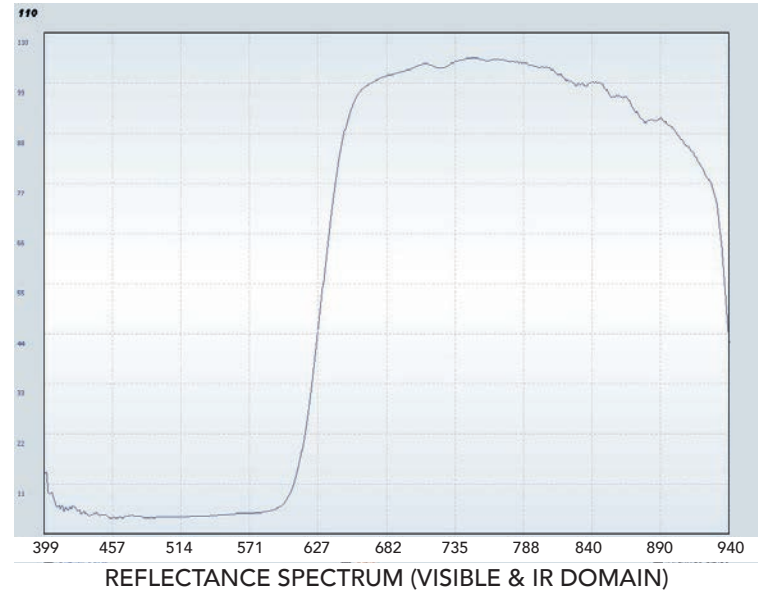


Kremer n° 21140
Cadmium Red
No. 3, dark, very light-
fast, opaque

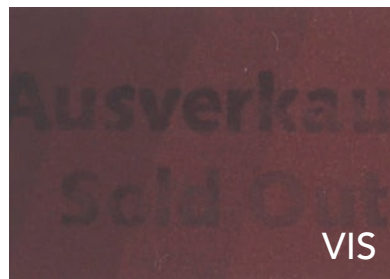


IRFC

UVFC

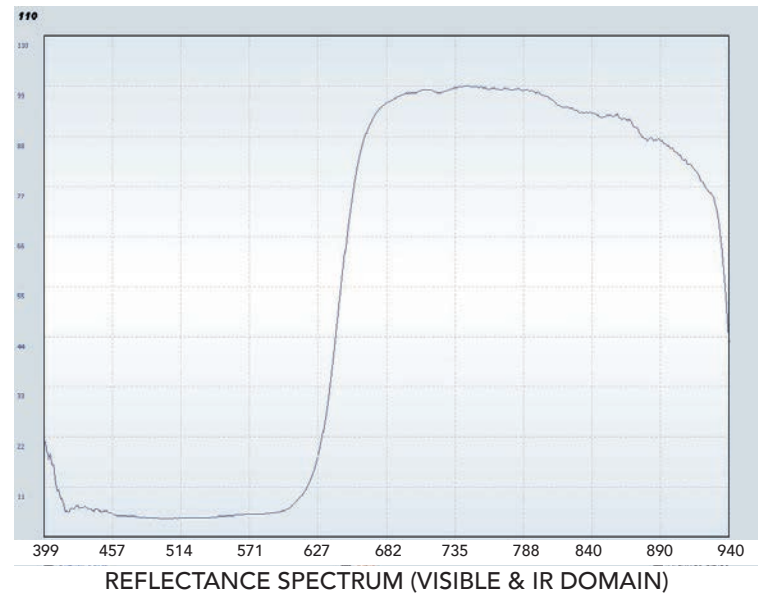


Kremer n° 21150
Cadmium Red
No. 4, bluish purple,
very lightfast, opaque



IRFC

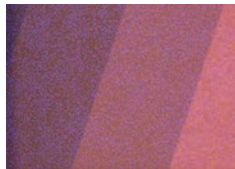
UVFC



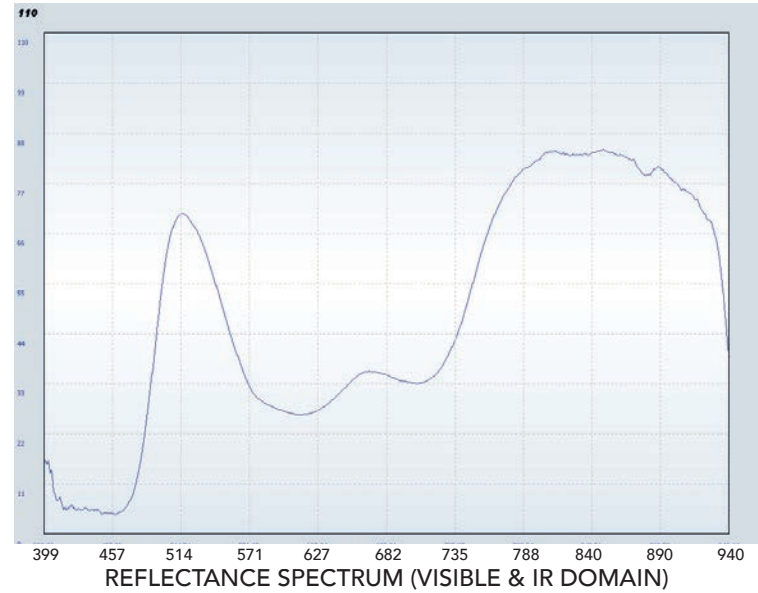
Kremer n° 44500
Cadmium Green, light,
mixture of cadmium
yellow and ultramarine
blue



IRFC



UVFC



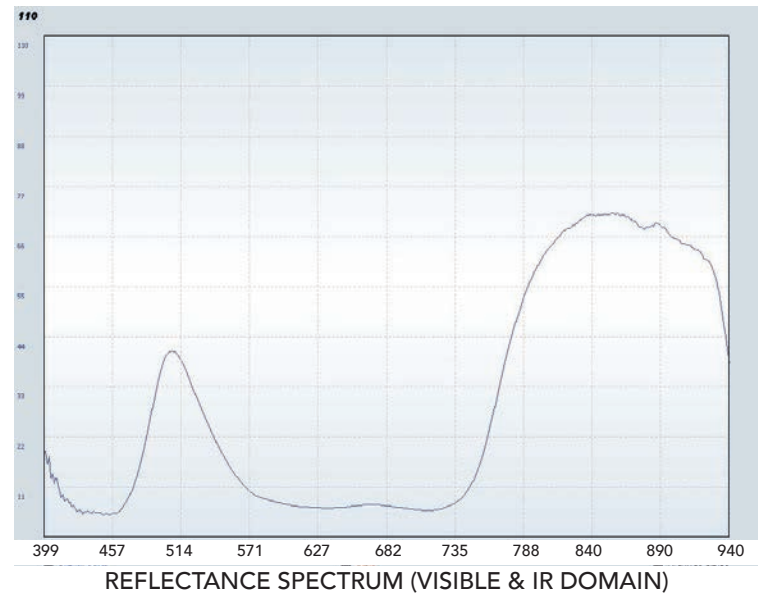
Kremer n° 44510
Cadmium Green, dark,
mixture of cadmium
yellow and ultramarine
blue



IRFC



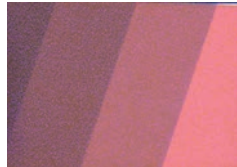
UVFC



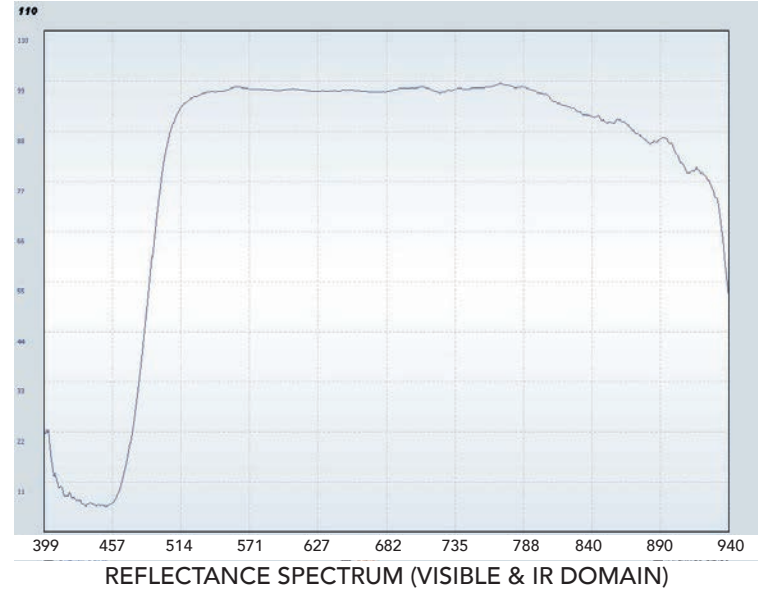
Kremer n° 21010
Cadmium Yellow
Lemon No.1, very
lightfast, opaque



IRFC



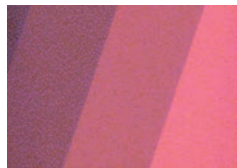
UVFC



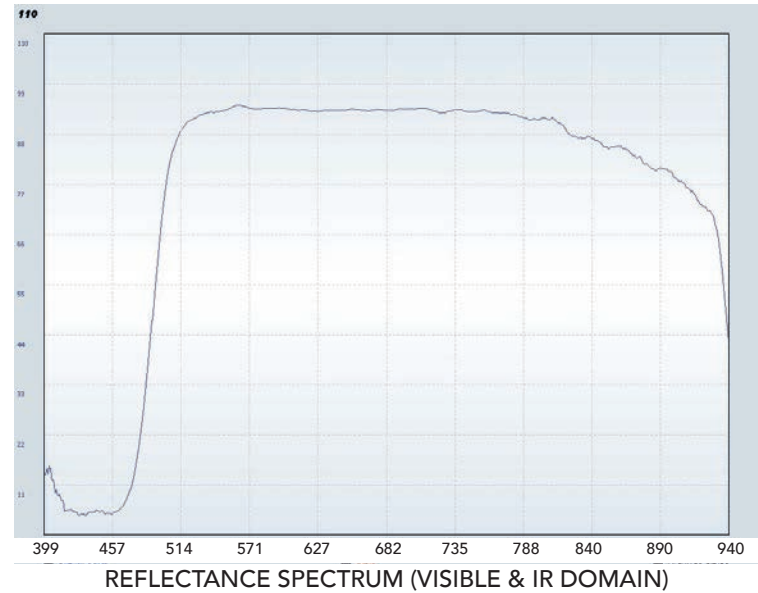
Kremer n° 21020
Cadmium Yellow
No. 2, very light, very
lightfast, opaque



IRFC



UVFC



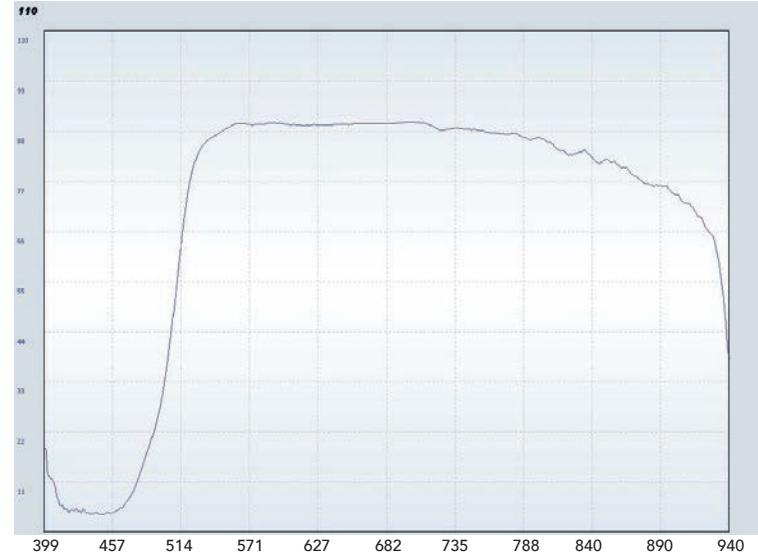
Kremer n° 21030
Cadmium Yellow
No. 4 light, very light-
fast, opaque



IRFC



UVFC

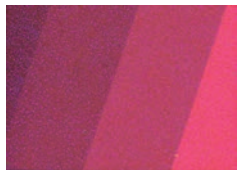


REFLECTANCE SPECTRUM (VISIBLE & IR DOMAIN)

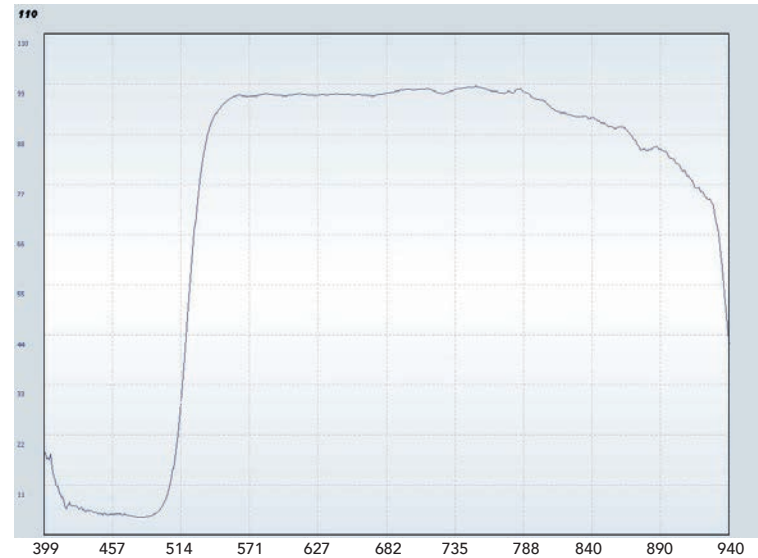
Kremer n° 21040
Cadmium Yellow
No. 6, medium, very
lightfast, opaque



IRFC



UVFC



REFLECTANCE SPECTRUM (VISIBLE & IR DOMAIN)

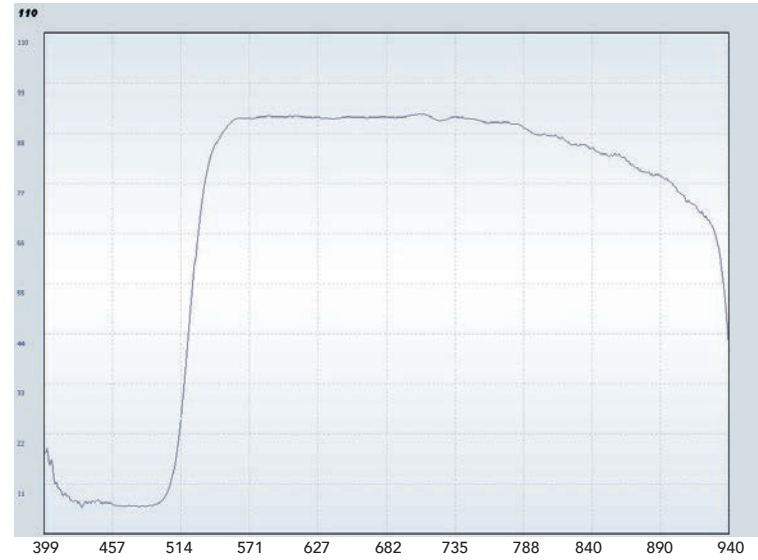
Kremer n° 21050
 Cadmium Yellow
 No. 8, medium dark,
 very lightfast, opaque



IRFC

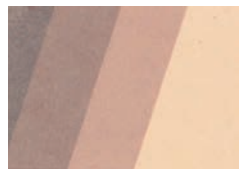


UVFC

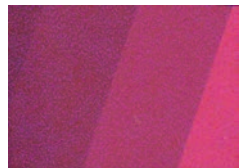


REFLECTANCE SPECTRUM (VISIBLE & IR DOMAIN)

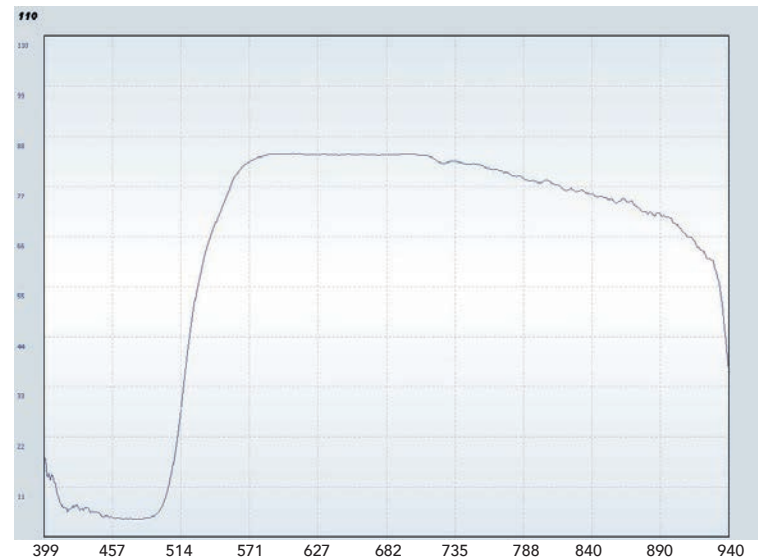
Kremer n° 21060
 Cadmium Yellow
 No. 9, dark, very light-
 fast, opaque



IRFC



UVFC



REFLECTANCE SPECTRUM (VISIBLE & IR DOMAIN)